

Modular Matrix Controller

Super Systems Inc.'s **Modular Matrix Controller** provides a flexible platform for meeting a large variety of control applications. The expandable I/O for analog and digital cards allows for right-sizing an application. The instrument has all the built-in features for sophisticated thermal processing applications, includes a customizable HMI allowing the right interface to be created for the application, and includes built-in data logging.



Modular Matrix Product Video

Multiple Screen Sizes

- Custom Designed Interface – compact HMI

Expandable I/O

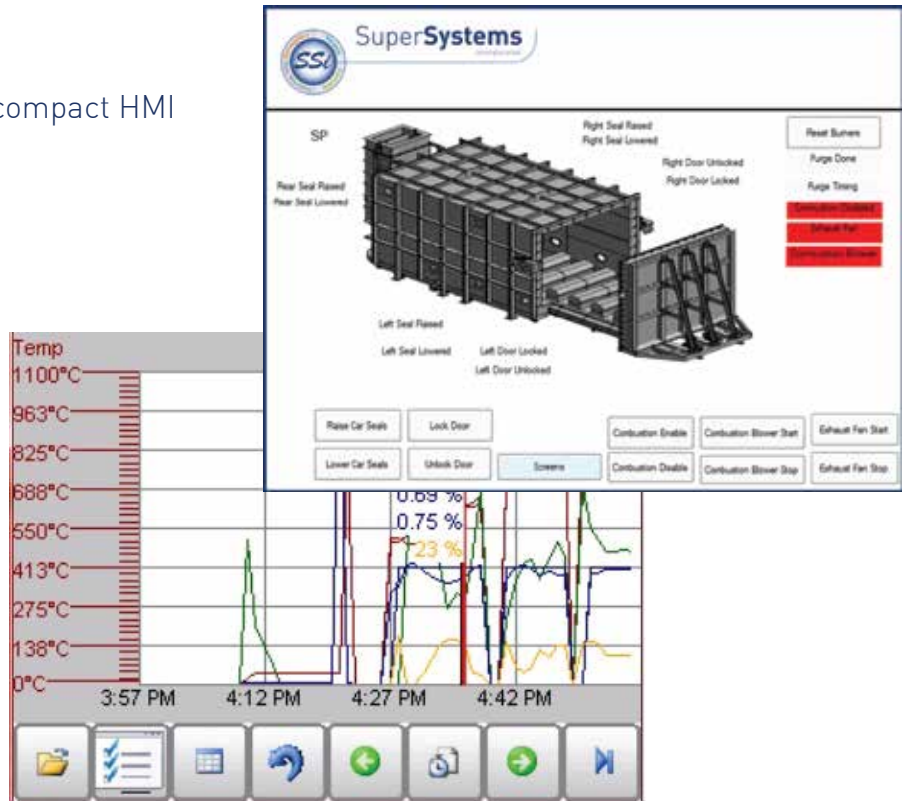
- Analog Inputs (4 per card)
- Analog Outputs (4 per card)
- Digital Inputs (12 per card)
- Digital Outputs (12 per card)

Robust Communication Supported

- Ethernet/Modbus/TCP
- RS485 Host/Client
- DF1 – Allen-Bradley
- Vacuum Gauge Comms
 - Televac
 - Infocon
 - Leybold

Multiple Recipe Programmers

- Segment or Step



Modular Matrix Controller



- Batch I/Q, Continuous, Nitriding
- Temper, Car Bottom
- Vacuum
- Generator

Applications

- Custom Overview Screen Using cHMI
 Math Block for extending functionality
 Recipe - Segment Profile
 - Zone, Event, Time
 Data logging to screen
 - Process Data
 - Batch

Features

Feature	Max Expandable I/O
Max Analog Inputs on Backplane:	24
Max Aux Analog Inputs:	40
Max Analog Outputs on Backplane:	16
Max Digital Outputs on Backplane:	64
Max Digital Inputs on Backplane:	32
Max PID Loops:	16
Max Calculated Variables:	8
Max Flow Meters:	8
Max Programmers:	8
Max Vacuum Gauges:	8
Max Probes:	8

Mounting:	DIN rail
Display:	Remote Configurable Color Touch Screen
Supply Power:	24 Volts DC
Input Types:	TC, mV, mA
Accuracy:	< 1%
Control Type:	Proportional (PID) - On/Off or Analog Out
Control Algorithm:	Temperature, Carbon, Dew Point, Pressure, Gas Flow, User-Defined
Configuration:	Touch Screen or PC Configurator
Communications:	Ethernet (Modbus TCP), Modbus RTU (RS485), Allen-Bradley DF1, Televac MM200

TS Manager: Touch screen flashcard data management, remote data viewer, historical data backup, SuperDATA integration.



Software Configuration/Remote Management



SuperSystems
 incorporated

7205 Edington Drive
 Cincinnati, OH 45249
 513.772.0060 phone
 513.772.9466 fax

www.supersystems.com