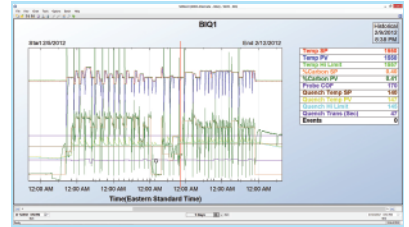




## Features & Functions

Batch No. 96	Batch No. 97	Batch 1	Vacuum Temper No. 89	Draw No. 81
Operator: Jim Start Completion: 12:16 Temp SP: 1350.00 % Carbon SP: 0.00	Break	Furnace Maintenance	SAT	Temp: 1350.00 Temp SP: 1350.00 Temp SP: 1350.00 Temp SP: 1350.00
Furnace Survey	Wash	Pit No. 90	Vacuum No. 90	

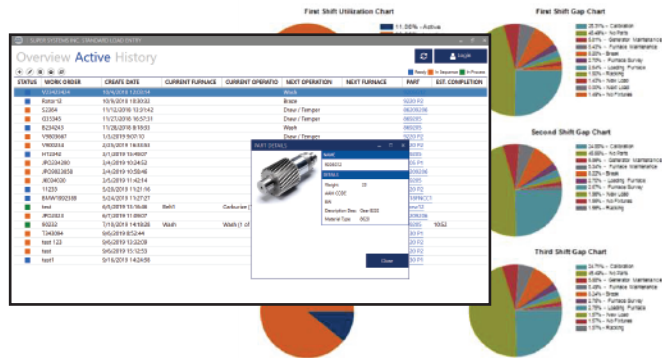


### Recipe Management

- Create process groups based on process performed
- Create individual recipes and assign them to a process

### Standard Reports

- Gap time report
- Load report with trend chart
- Load report with tabular data
- Furnace Utilization Report
- Production report: all furnaces
- Production report: current furnace
- Time to heat with trend chart
- Time to heat with tabular data



- Automatic downtime tracking
- Customizable display
- MRP/ERP integration
- Recipe accountability
- Load reports w/ process data
- Recipe database with revision control, unlimited recipes, and recipe profile view to help prevent operator error
- Combines load tracking, visualization, and management reporting
- Recipe management with parts database
- Mobile Load Entry application with furnace view, gap time entry, capture load photo/image, scan traveler for load start, active load screen with recipe viewer, historical load search with details, and chart information
- Load history includes recipe, process data, job information, load image, notes, and user-defined relevant details
- Shop traveler generation with barcoding
- Shop templates and routings for quick job setup and step sequencing
- Supports both programmable/recipe and non-recipe instruments
- Automatic recipe start and completion
- Associate additional documents with load history (Metlab results, photos, spreadsheets, etc.)

### Compact Load Entry

- Runs on an SSi 9000 Series touch screen
- Provides load control at the touch screen
- Works in conjunction with Standard Load Entry
- Allows for load charging, recipe previewing, and bar code scanning



Order #	5	Heat #	
Part Number	PN-3541120	Work Order	
Serial #	SN-3554112	Weight	1.22
Customer	Rodney's	Qty	5
Lot #			

Add Cancel

### Parts and Equipment

- Stores part name/number and weight
- Parts assigned to specific process groups and recipes
- Links equipment to appropriate process groups